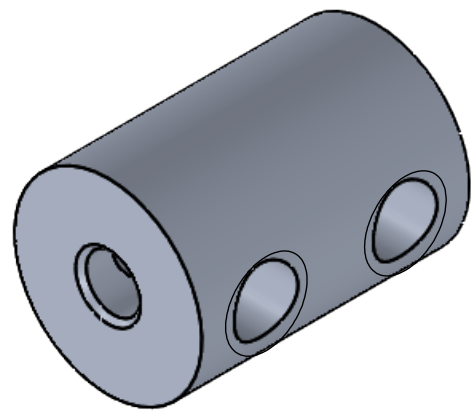
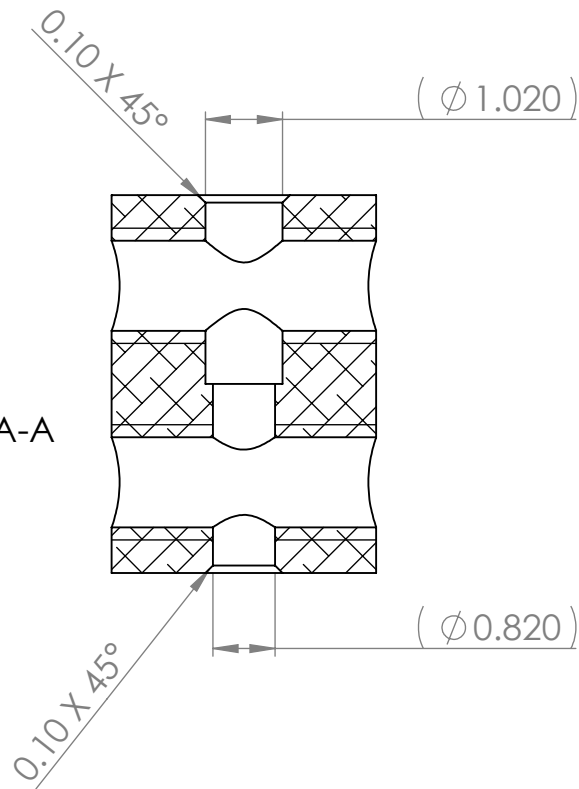
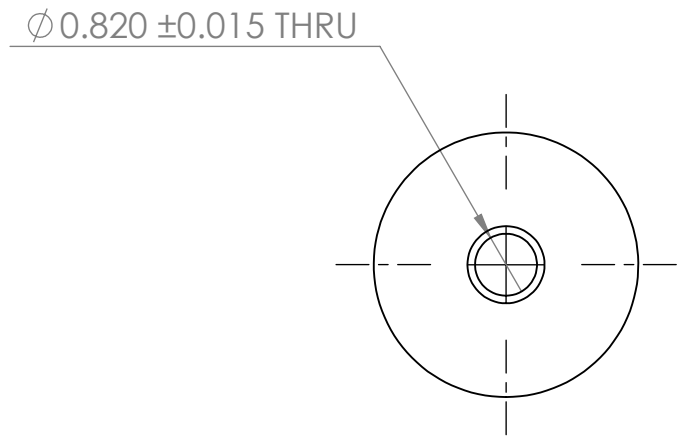
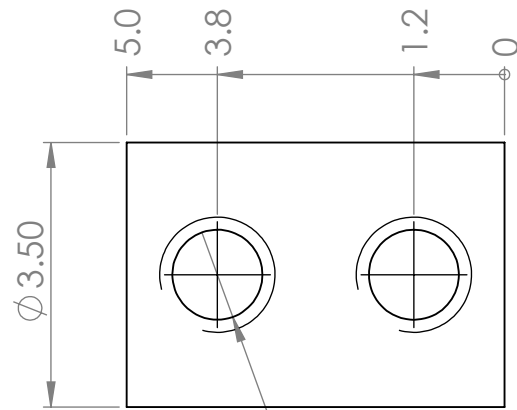
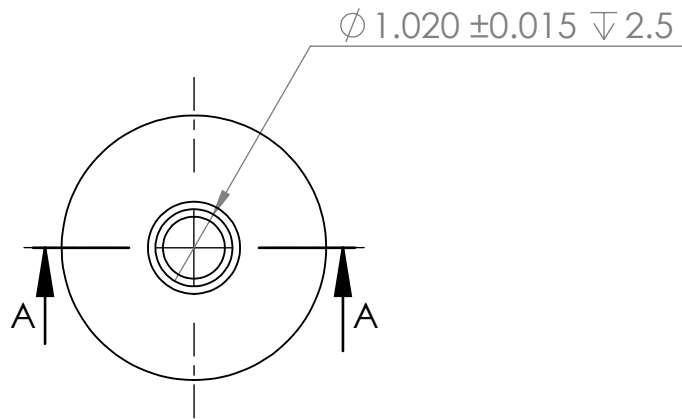


REVISIONS			
REV.	DESCRIPTION	DATE	BY
A	INITIAL RELEASE	2021-06-29	JHS



- NOTES:
- BAG AND TAG WITH NAME, NUMBER, AND REVISION.
 - CHEM FILM PER MIL-DTL-5541F TYPE II CLASS 1A

UNLESS OTHERWISE SPECIFIED:		Ernest Orlando Lawrence Berkeley National Laboratory	
DIMENSIONS IN MM		PROJECT PHYSICS LDRD	
TOLERANCES:		TITLE: Trillium2 Shaft Coupler 08	
ANGULAR ± 0.5°		SOLIDWORKS MODEL REVISION AT TIME OF RELEASE: 0007	
X ± 0.5		SIZE B	DWG. NO. TRL-0029
X.X ± 0.1		REV A	
X.XX ± 0.05		SCALE: 10:1	
X.XXX ± 0.010		WT: Kg	
GD&T PER: ASME Y14.5M-2009		SHEET 1 OF 1	
MATERIAL 6061-T6			
MACHINING FINISH: 3.2 micron			
EDGE BREAK: 0.1mm x 0.1mm			
PROJECTION: THIRD ANGLE			
DO NOT SCALE DRAWING			